



**Compatible with:**

Phones that support Qi charging

**Important:**

Self-installation instructions and advice are provided for your convenience. It is your responsibility to determine if you have the knowledge, skills, and physical ability required to properly perform an installation. ProClip USA, Inc. shall have no liability for damage or injury resulting from the installation or use of any ProClip or third party products. It is your responsibility to ensure that all products are installed in adherence with local laws and regulations and in such a manner as to allow a vehicle to be operated safely and without distraction. ProClip USA, Inc. product warranties do not cover the installation, removal or re-installation of any product.

**NOTICE:** The MagicPlates come on a template designed to ensure maximum usability and safety. **Attaching the plates to the phone, closer together than the template recommends, may interfere with charging and could be hazardous. If your MagicPlates are getting hot while charging immediately stop using the MagicMount. Remove the plates from your phone and space them farther apart. There is a circle on the MagicMount face. The plates should always rest outside this circle.**

**Attention:**

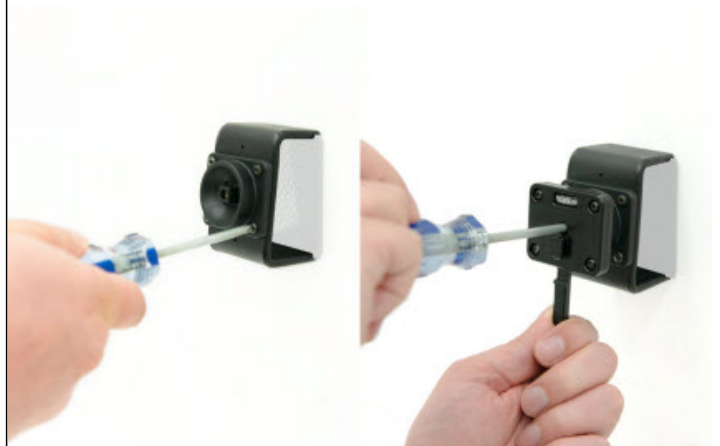
Carefully read all instructions and review the images before installing this product.



**1. To install the Adapter Plate:**

Completely loosen the center screw on the adapter.

Then, using light force, pull the swivel base plate away from the back of the adapter. This will separate the adapter from the Tilt-Swivel base plate.



2. Place the Tilt-Swivel base plate over the matching holes in your mounting bracket (demo mount shown in picture) Attach the base plate using the applicable screws.

Then re-attach the adapter using the center screw.



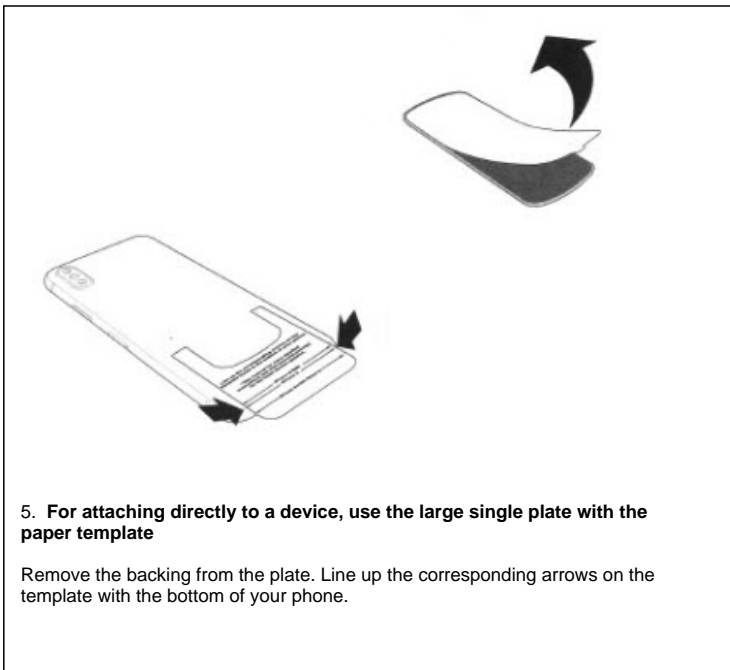
**3. To attach the Scosche mount:**

Plug the micro-USB cable into the bottom of the MagicMount.



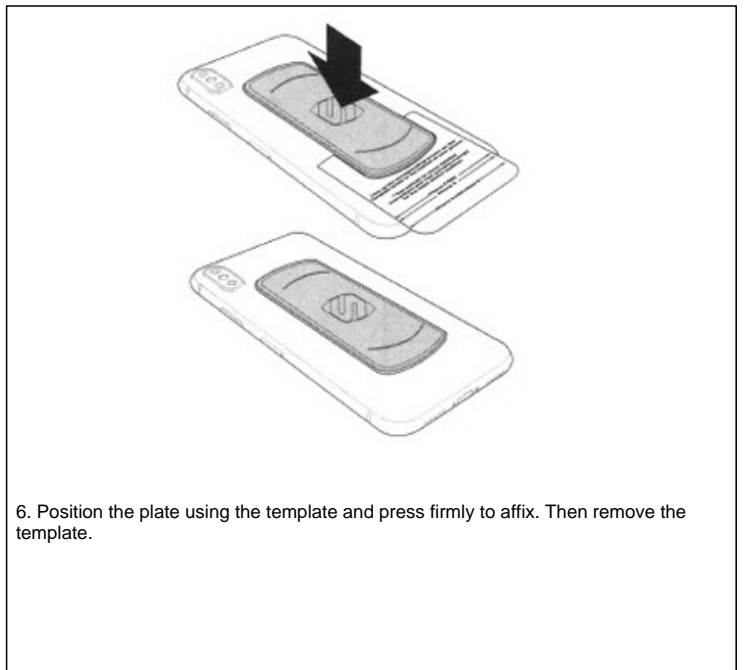
4. Slide the MagicMount over the adapter plate's "T-Prong" until it snaps into place.

Turn over for more----->

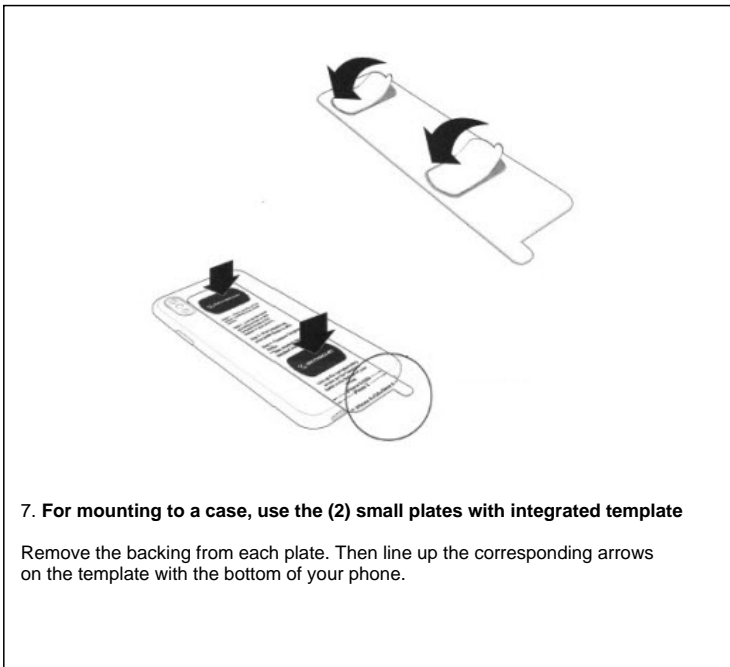


**5. For attaching directly to a device, use the large single plate with the paper template**

Remove the backing from the plate. Line up the corresponding arrows on the template with the bottom of your phone.

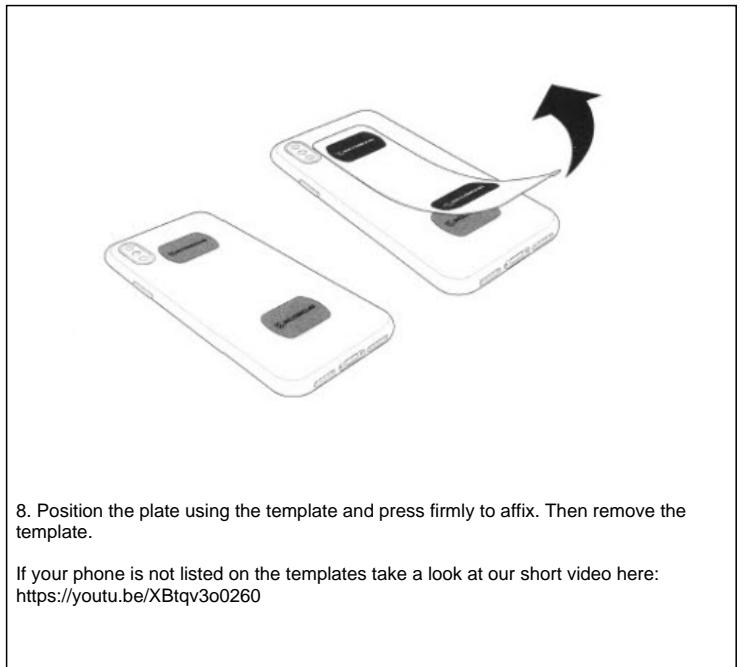


**6. Position the plate using the template and press firmly to affix. Then remove the template.**



**7. For mounting to a case, use the (2) small plates with integrated template**

Remove the backing from each plate. Then line up the corresponding arrows on the template with the bottom of your phone.



**8. Position the plate using the template and press firmly to affix. Then remove the template.**

If your phone is not listed on the templates take a look at our short video here: <https://youtu.be/XBtqv3o0260>

**Returns**

All returns must be made within thirty (30) days of the delivery date and include proof of purchase, a copy of your original order, or invoice. No products shipped hereunder may be returned without ProClip USA's prior approval. In order to return a product, the buyer must obtain an RMA number (Return Merchandise Authorization Number). **Items returned without a valid RMA number may be rejected. Items that are open, used, damaged, or returned without all original components may have a restocking fee applied.**

**Limited Warranty and Liabilities**

ProClip warrants that the Products will be free of defects in materials and workmanship for a period of one (1) year from the date of purchase. If any Product should become defective within the warranty period, ProClip, at its option, will replace it, repair it or refund the purchase price. Repair or replacement parts or Products will be furnished on an exchange basis and will either be new or reconditioned. All replaced Products shall become the property of ProClip. Warranty service is available to you by delivering the Product during the warranty period to the company it was purchased from or to ProClip at 4915 Voges Rd., Madison, WI 53718 USA and providing proof of purchase, price and date. If shipped to ProClip, the buyer must first call ProClip at +1 800-296-3212 or e-mail ProClip at [returns@proclipusa.com](mailto:returns@proclipusa.com) to obtain a return approval and return number. You will bear all shipping, packaging and insurance costs and all other costs, excluding labor and parts, necessary to effectuate repair, replacement or refund under this warranty. For more information on how to obtain warranty service, write, e-mail or telephone ProClip at 4915 Voges Rd., Madison, WI 53718 USA. Tel: +1 800-296-3212, e-mail: [returns@proclipusa.com](mailto:returns@proclipusa.com).

THIS LIMITED WARRANTY DOES NOT EXTEND TO ANY PRODUCT WHICH HAS BEEN DAMAGED AS A RESULT OF ACCIDENT, MISUSE, ABUSE OR AS A RESULT OF UNAUTHORIZED SERVICE. THIS WARRANTY IS IN LIEU OF ALL OTHER EXPRESS WARRANTIES FOR THIS PRODUCT. IMPLIED WARRANTIES, INCLUDING THOSE OF MERCHANTABILITY, FITNESS FOR A PARTICULAR PURPOSE AND NON-INFRINGEMENT SHALL HAVE NO GREATER DURATION THAN 1 YEAR FROM THE DATE OF PURCHASE. IN THE EVENT THIS PRODUCT BECOMES DEFECTIVE DURING THE WARRANTY PERIOD, THE PURCHASER'S EXCLUSIVE REMEDY SHALL BE REPAIR, REPLACEMENT OR REFUND AS PROVIDED ABOVE. IN NO EVENT SHALL PROCLIP BE LIABLE FOR INCIDENTAL OR CONSEQUENTIAL DAMAGES, INCLUDING WITHOUT LIMITATION LOSS OF PROPERTY, ARISING FROM BREACH OF ANY EXPRESSED OR IMPLIED WARRANTY. PROCLIP DISCLAIMS ALL WARRANTIES, EXPRESS OR IMPLIED, OTHER THAN THOSE SET FORTH ABOVE. IN NO EVENT WILL PROCLIP BE LIABLE TO YOU OR ANY THIRD PARTY FOR ANY INCIDENTAL OR CONSEQUENTIAL DAMAGES, INCLUDING, WITHOUT LIMITATION, INDIRECT, SPECIAL, PUNITIVE, OR EXEMPLARY DAMAGES, INCLUDING ATTORNEY FEES ARISING OUT OF THE USE OF OR THE INABILITY TO USE THE PRODUCTS, OR FOR ANY CLAIM BY ANY OTHER PARTY, EVEN IF PROCLIP HAS BEEN ADVISED OF THE POSSIBILITY OF SUCH DAMAGES.

**Regulatory information:** [www.proclipusa.com/regulatory.html](http://www.proclipusa.com/regulatory.html)

**ProClip USA, Inc. • 4915 Voges Road • Madison, WI 53718 • USA**

Office: +1 608-807-5320 • Fax: +1 920-372-0066 • Toll free: 800-296-3212 • Internet: [www.proclipusa.com](http://www.proclipusa.com)