

**Item No. 247045 - Charging Holder with Spring Lock and Tilt Swivel for Hard Wired Installation and use with OtterBox Defender Case**



**Compatible with:**

Samsung Galaxy Tab 2 7.0 (GT-P3100)

**WARNING:**

Please hold the vehicle mount and holder over the place where the mount attaches to the dash **before** installing them to insure you like the location of the solution. Once installed and screwed together the products are **non-refundable**.

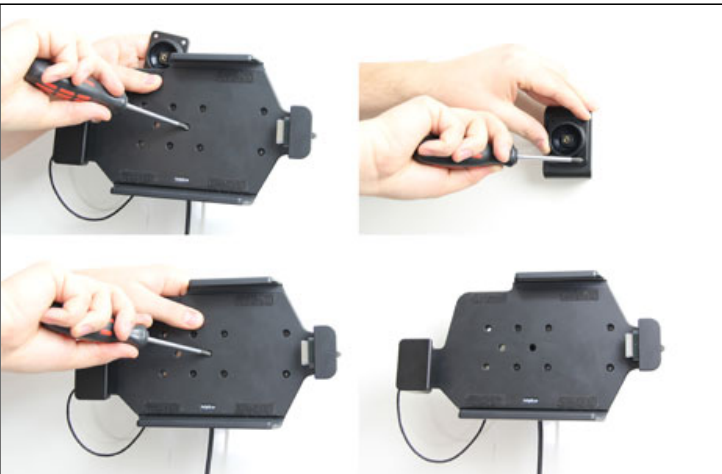
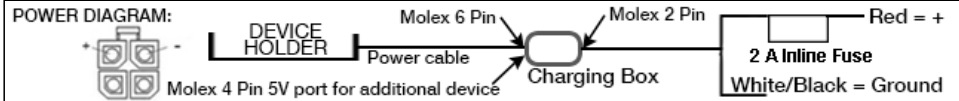
**Important:**

Self-installation instructions and advice are provided for your convenience. It is your responsibility to determine if you have the knowledge, skills, and physical ability required to properly perform an installation. ProClip USA, Inc. shall have no liability for damage or injury resulting from the installation or use of any ProClip or third party products. It is your responsibility to ensure that all products are installed in adherence with local laws and regulations and in such a manner as to allow a vehicle to be operated safely and without distraction. ProClip USA, Inc. product warranties do not cover the installation, removal or re-installation of any product.

**Power Rating:** Input Voltage: 10-30 VDC, 1.1A / Output Voltage: 5 VDC, 2A.

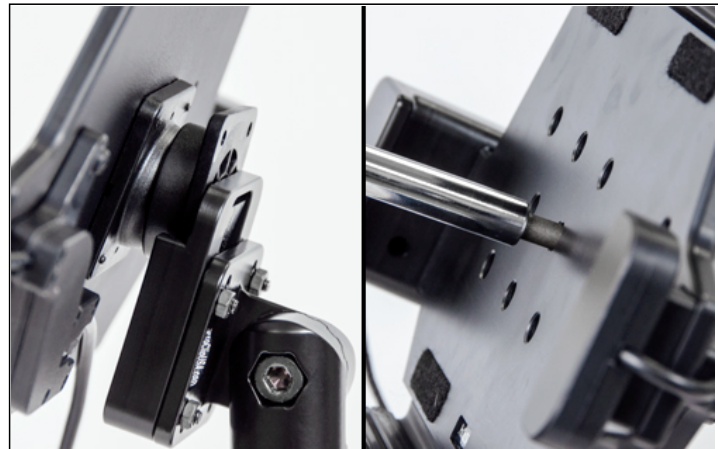
**Wiring:** Follow the diagram below. Route the wire from the holder behind the dashboard and connect it to a power source; White or Black to ground or the vehicle chassis, and Red via the 2A in-line fuse to a positive power source. Professional installation is recommended.

**Attention:** Carefully read all instructions and review the images before installing this product.



**1. To attach the holder to a mount:**

Unscrew the screw in the center of the holder so you can remove the tilt swivel base plate on the back. Place the base plate over the matching holes in the face plate of your mounting bracket. Attach the base plate by using the applicable screws enclosed - self-tapping screws if the mount has small holes or machine screws with nuts if the mount has larger holes. Place the holder onto the base plate and attach it with the center screw. Adjust the holder to the preferred position and tighten the screw firmly.



**2. To attach the holder to a Locking Move Clip (quick release plate):**

Slide the tilt swivel base plate on back of the holder into the clip. Push until it clicks into place. Adjust the holder to the preferred position and tighten the center screw firmly to keep the holder in its position. Then, if you want easier angling or rotation of the holder between landscape and portrait position, loosen the screw slightly.

**To remove the holder from the Locking Move Clip:**

Press on the release tab and pull the holder out of the clip.



**3. To insert the tablet into the holder:**

Slide the tablet carefully into the holder. Then slide the spring lock onto the left part of the holder. Push until it clicks into place. The holder and tablet is in place. **Note:** If you want to rotate the tablet between portrait and landscape view, or angle it for a better view, then loosen the center screw in the holder slightly.



**4. To remove the tablet from the holder:**

Pull firmly on the spring lock so it releases and pull it away from the holder. Then slide the tablet carefully out of the holder. For wiring and connecting to a power source, please follow the diagram further up on this page.

# WARRANTY, RETURNS AND REGULATORY INFORMATION

## Returns

No products shipped here under may be returned without ProClip's prior approval. In order to return a product, buyer must obtain an RMA# (Return Merchandise Authorization Number). All returns must be made within thirty (30) days of the invoice date and include proof of purchase. The product must be in undamaged and unused condition, meaning: NO screw can be screwed into any product, not even into the pre-drilled holes, NO holes punched through a product, NO scratches or screw marks, and NO Velcro tape etc. We reserve the right to withhold a refund if we deem the product is damaged. A copy of your original order or invoice must accompany a return. ALL COMPONENTS PERTAINING TO THE ORIGINAL PART MUST BE RETURNED.

## Limited Warranty and Liabilities

ProClip warrants that the Products will be free of defects in materials and workmanship for a period of one (1) year from the date of purchase. If any Product should become defective within the warranty period, ProClip, at its option, will replace it, repair it or refund the purchase price. Repair or replacement parts or Products will be furnished on an exchange basis and will either be new or reconditioned. All replaced Products shall become the property of ProClip. Warranty service is available to you by delivering the Product during the warranty period to the company it was purchased from or to ProClip at 4915 Voges Rd., Madison, WI 53718 USA and providing proof of purchase, price and date. If shipped to ProClip, the buyer must first call ProClip at +1 800-296-3212 or e-mail ProClip at [returns@proclipusa.com](mailto:returns@proclipusa.com) to obtain a return approval and return number. You will bear all shipping, packaging and insurance costs and all other costs, excluding labor and parts, necessary to effectuate repair, replacement or refund under this warranty. For more information on how to obtain warranty service, write, e-mail or telephone ProClip at 4915 Voges Rd., Madison, WI 53718 USA. Tel: +1 800-296-3212, e-mail: [returns@proclipusa.com](mailto:returns@proclipusa.com).

THIS LIMITED WARRANTY DOES NOT EXTEND TO ANY PRODUCT WHICH HAS BEEN DAMAGED AS A RESULT OF ACCIDENT, MISUSE, ABUSE OR AS A RESULT OF UNAUTHORIZED SERVICE. THIS WARRANTY IS IN LIEU OF ALL OTHER EXPRESS WARRANTIES FOR THIS PRODUCT. IMPLIED WARRANTIES, INCLUDING THOSE OF MERCHANTABILITY, FITNESS FOR A PARTICULAR PURPOSE AND NON-INFRINGEMENT SHALL HAVE NO GREATER DURATION THAN 1 YEAR FROM THE DATE OF PURCHASE. IN THE EVENT THIS PRODUCT BECOMES DEFECTIVE DURING THE WARRANTY PERIOD, THE PURCHASER'S EXCLUSIVE REMEDY SHALL BE REPAIR, REPLACEMENT OR REFUND AS PROVIDED ABOVE. IN NO EVENT SHALL PROCLIP BE LIABLE FOR INCIDENTAL OR CONSEQUENTIAL DAMAGES, INCLUDING WITHOUT LIMITATION LOSS OF PROPERTY, ARISING FROM BREACH OF ANY EXPRESSED OR IMPLIED WARRANTY.

PROCLIP DISCLAIMS ALL WARRANTIES, EXPRESS OR IMPLIED, OTHER THAN THOSE SET FORTH ABOVE.

IN NO EVENT WILL PROCLIP BE LIABLE TO YOU OR ANY THIRD PARTY FOR ANY INCIDENTAL OR CONSEQUENTIAL DAMAGES, INCLUDING, WITHOUT LIMITATION, INDIRECT, SPECIAL, PUNITIVE, OR EXEMPLARY DAMAGES, INCLUDING ATTORNEY FEES ARISING OUT OF THE USE OF OR THE INABILITY TO USE THE PRODUCTS, OR FOR ANY CLAIM BY ANY OTHER PARTY, EVEN IF PROCLIP HAS BEEN ADVISED OF THE POSSIBILITY OF SUCH DAMAGES.

## Regulatory Information

All ProClip devices are designed to be compliant with rules and regulations in locations they are sold and will be labeled as required. Any changes or modifications to ProClip equipment, not expressly approved by ProClip USA, Inc. could void the user's authority to operate the equipment.

## Power Supply

Use only the ProClip supplied power supply. Use of alternative power supply will invalidate any approval given to this device and may be dangerous.

## Radio Frequency Interference Requirements- FCC

This device complies with part 15 of the FCC Rules. Operation is subject to the following two conditions: (1) This device may not cause harmful interference, and (2) this device must accept any interference received, including interference that may cause undesired operation.

This equipment has been tested and found to comply with the limits for a Class B digital device, pursuant to Part 15 of the FCC Rules. These limits are designed to provide reasonable protection against harmful interference in a residential installation. This equipment generates, uses, and can radiate radio frequency energy and, if not installed and used in accordance with the manufacturer's instructions, may cause interference harmful to radio communications.

There is no guarantee, however, that interference will not occur in a particular installation. If this equipment does cause harmful interference to radio or television reception, which can be determined by turning the equipment off and on, the user is encouraged to try to correct the interference by one or more of the following measures:

- 1- Reorient or relocate the receiving antenna.
- 2- Increase the separation between the equipment and receiver.
- 3- Connect the equipment to an outlet on a circuit different from that to which the receiver is connected.
- 4- Consult the dealer or an experienced radio or TV technician for help.

## Radio Frequency Interference Requirements – Canada

This Class B digital apparatus complies with Canadian ICES-003. Cet appareil numérique de la classe B est conforme à la norme NMB-003 du Canada.

European Union EU and EFTA CE Marking



Statement of Compliance - ProClip USA, Inc. hereby declares that this device is in compliance with all the applicable Directives, 2014/30/EU, 2014/35/EU and 2011/65/EU. A Declaration of Conformity may be obtained upon request.

Please contact us for more information on this product and its regulatory compliance.

## CONTACT INFORMATION



4915 Voges Rd.  
Madison, WI 53718  
USA  
Phone: +1 608-807-5320  
US Toll Free: 800-296-3212  
Email: [customerservice@proclipusa.com](mailto:customerservice@proclipusa.com)  
Web: [www.proclipusa.com](http://www.proclipusa.com)

## Company Info:

**ProClip USA, Inc.** provides In-Vehicle Device Mounting solutions and accessories. The ProClip products are custom fit virtually every model and handheld device available such as cell phones, smartphones, tablets, MP3 players, navigation systems, satellite radios, two-way radios and mobile computing. These innovative, convenient, secure and easy-to-install mounting solutions provide a safer and more enjoyable driving experience.

© 2017 ProClip USA, Inc. All rights reserved